

Annual Report 2025

SWISS
FOUNDATION
FOR TECHNICAL
COOPERATION

Short version



Full version online:
www.swisscontact.org/report2025



Photo: Jitendra, a local youth from Koshi Province (Nepal) who gained skills in agricultural machinery repair and maintenance.

Mission

We unleash the potential of private initiative to foster sustainable development and shared prosperity in developing and emerging countries.

WHAT WE DO

- We strengthen the competencies of people by promoting employment and generating income opportunities.
- We increase the competitiveness of enterprises to enable growth in their business.
- We foster inclusive social and economic systems by developing sustainable, resilient and scalable innovations.

CONTENT

- 3 Editorial
- 4 Results and impact 2025
- 5 Financial statement 2025
- 5 Private partners and their contributions
- 6 Projects and countries
- 7 Project case study: Albania
- 8 Partnerships
- 10 Sustainability
- 12 Organisation
- 14 Partners

International cooperation: development through expertise and partnership



”

Our focus is on international cooperation that delivers tangible benefits for all stakeholders, particularly companies in donor countries. This dual impact significantly enhances the effectiveness of development work.

Thomas D. Meyer, Chair

Photo: Philippe Schneuwly, CEO and Thomas D. Meyer, Chair

Editorial as a video:
www.swisscontact.org/report2025





Photo: A spray drone is demonstrated in the Bolivian Altiplano as part of a Swisscontact project promoting sustainable agriculture through precision technology.

Results and Impact 2025

Swisscontact relies on systematic impact measurement. Consistent and comparable tracking and measurement of results in different projects are integral parts of project management and quality assurance for us.

This is what we achieved in 2025:

CHF 72.3 M
in additional income,

generated by 174 260 smallholders and SMEs (40.8% led by women), as well as by 50 189 individuals (51.2% women) who, thanks to skills development, have found new or better employment or started their own businesses. Out of those, 10.1% belonged to particularly marginalised groups.

36687
jobs

created or saved. Thereof 19539 in existing businesses and 17 148 through self-employment.

389412
smallholders and SMEs

gained access to improved products and services, out of those 42.8% were led by women, 5.3% belonged to particularly marginalised groups.

147690
people,

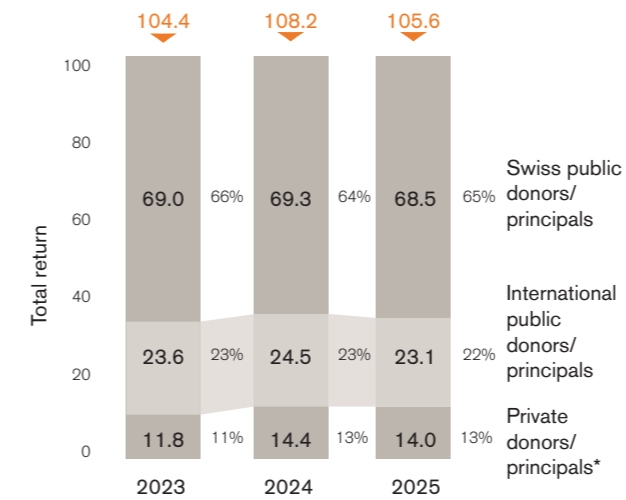
35.6% of whom are women, have completed programmes in skills development, entrepreneurship, and labour market insertion. Out of all the people, 31% belonged to particularly marginalised groups.

These global 2025 results are derived from Swisscontact's impact measurement system. All figures are traceable.

Financial statement 2025

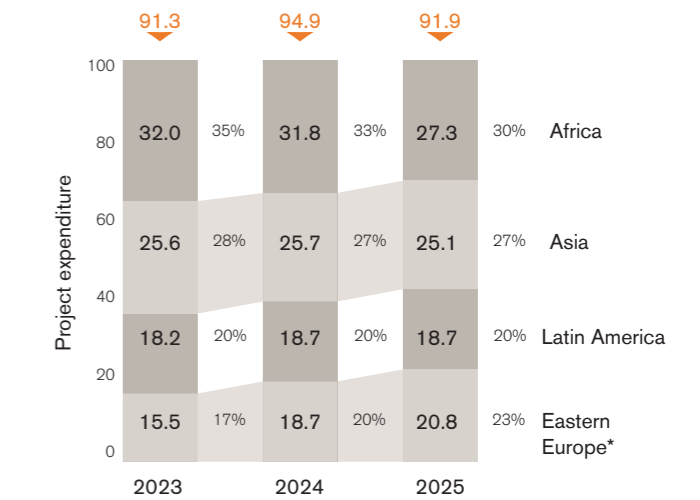
SOURCE OF FUNDS

Return in million CHF



EXPENDITURE

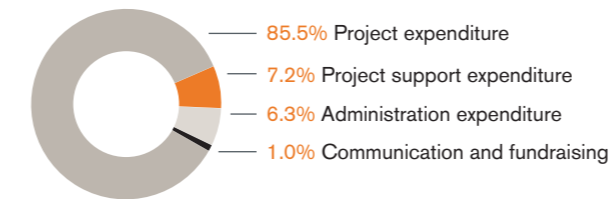
Project expenditure per region in million CHF



* including Switzerland (SEC, DC dVET, expenditure in Switzerland for global programmes, small projects managed from Switzerland)

EXPENDITURE CATEGORIES

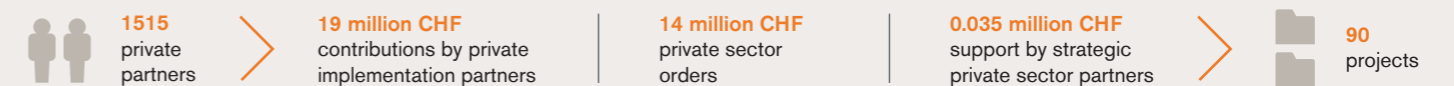
in relation to total expenditures



Financial Report 2025 (in German):
www.swisscontact.org/finanzbericht2025



Private partners and their contributions 2025

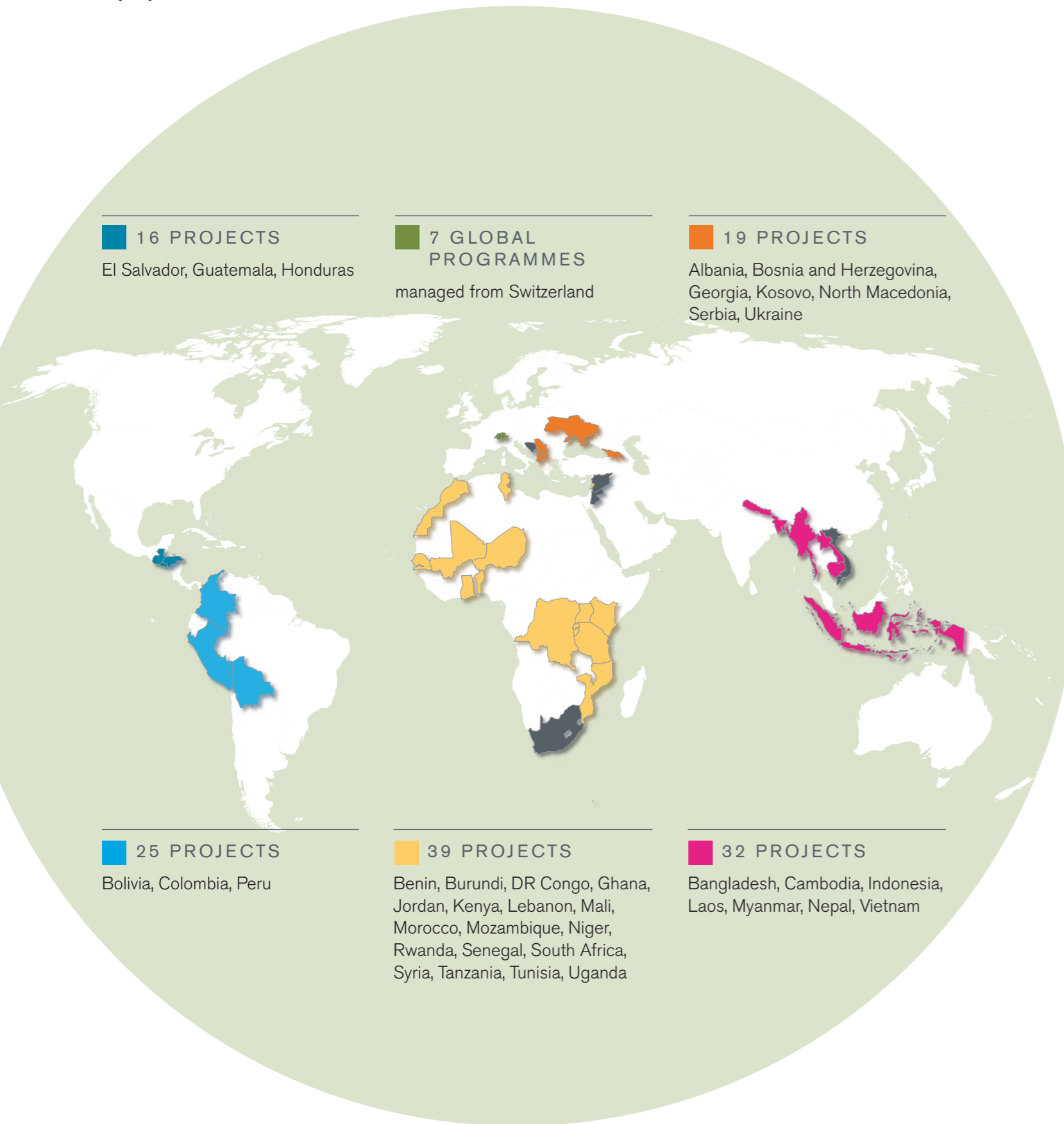


Private implementation partners and their contributions 2025



Global presence

138 projects in 39 countries



Albania: Skills that open doors to the future

As Albania undergoes economic transformation and moves closer to European integration, one challenge stands out: preparing young people for the jobs of today and tomorrow. For years, many graduates left school without the skills employers needed, while businesses struggled to find qualified staff. With the Skills for Jobs (S4J) project, launched in 2015 and running until 2027, the Swiss Agency for Development and Cooperation (SDC) together with Swisscontact set out to address this issue by reconnecting education with the world of work and restoring confidence in vocational education as a genuine pathway to opportunity.

A decade ago, vocational education in Albania was largely school based. Practical training was limited, cooperation with companies was weak, and trust between schools and employers was low. Students learned theory, but many were unprepared for working conditions in the labour market.

From education to employment

S4J addressed this gap through a gradual, hands-on approach. Instead of sweeping reforms, it focused on what worked in practice. Schools and companies began collaborating on small initiatives, testing work-based learning and adapting training to real labour market needs. Over time, these pilots showed results, proving that closer cooperation could benefit everyone involved.

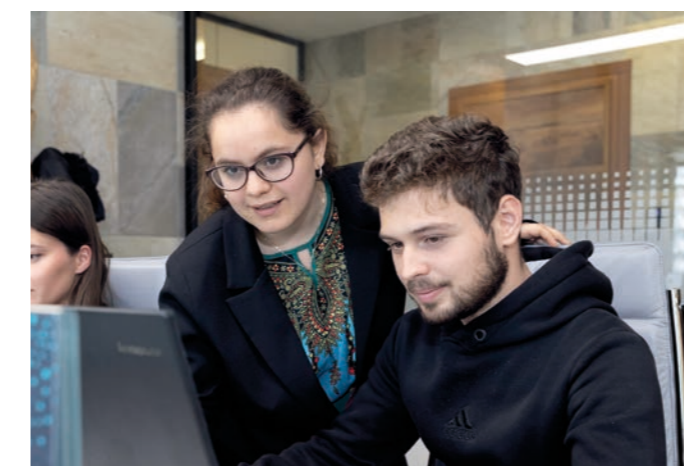


Photo: Kedri Dyrmishi, a student at the Technical Economic School Tirana.

Tracer studies indicate that within one year of graduating, 71% of 2024 graduates from S4J partner providers have found employment or are self-employed, and 55% are working in jobs aligned with their field of training.



Photo: At "Hamdi Bushati" VET School in Shkodra, learning goes beyond the classroom.

RESULTS

Work-based learning (WBL) programmes

- 19 618 young women and men graduated from 10 partner schools between 2016 and 2025.
- Of these 12 853 learners were engaged in work-based learning (apprenticeships) within private companies.
- 71% of the 2024 cohort were employed or self-employed within 12 months of graduation.

Dual Vocational Education and Training (VET)

Formally introduced nationwide in 2024 as a structured national reform model.

- Dual VET was introduced in 8 regions, accounting for 48% of the national VET providers.
- More than 150 in-company mentors from the private sector were trained.
- More than 250 companies collaborated.

More about this project:

www.swisscontact.org/report2025/albania





Photo: Unsafe surroundings around community water sources heighten vulnerability to waterborne diseases in climate-affected areas.

Creating impact together

Swisscontact knows how to bring different partners together and create impact jointly. Our strength lies in combining international experience with local expertise and networks and focusing on transforming systems around business cases that involve all relevant actors – from companies and business associations to educational institutions, government bodies, and financial institutions.

Why and how Swisscontact mobilises the right partners:

Local presence and trust

Swisscontact has been active for decades in developing and emerging countries worldwide and is closely connected with local companies and institutions. This trust enables us to bring actors to the table who otherwise typically would not enter into dialogue without experienced facilitation.

Expertise in market systems development

Our approach is designed to strengthen market systems. We create incentives for private and public actors to take joint action and initiate long-term change. Companies (international as well as local) benefit from improved framework conditions, skilled workers, and stronger market structures.

Thematic expertise

Swisscontact has a strong network of private and institutional partners in specific topical areas and industries. This facilitates collaboration, enables synergies, and makes Swisscontact a credible partner for new cooperation initiatives.

Added value for companies and partner countries

In 2025, Swisscontact collaborated with companies operating internationally in various public-private partnerships across different sectors. For these companies, this collaboration primarily involved skills development, labour market integration, and improving local market conditions. Companies also benefited from better access to qualified local workers, networking opportunities with other sectors, and closer links to local markets.

Partner countries also reaped the rewards of these collaborations. Local companies were able to strengthen their capacities, improve their access to markets and technologies, and grow with a more skilled workforce. At an individual level, people acquired skills that enabled them to increase their income through employment or self-employment.

Partnerships that make a difference

Two selected projects illustrate collaboration between public institutions and private companies facilitated by Swisscontact.

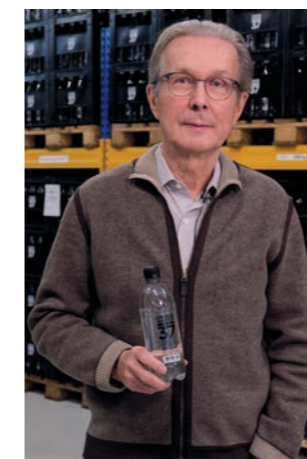
THE SHOMPRITEE PROJECT



Photo: A climate-affected woman earns her livelihood as a waste collector in Jashore.

The Shompritee Project supports people in Bangladesh who have been forced to leave their homes because of flooding, river erosion, and other climate impacts. It works closely with municipalities and local actors to improve access to basic services such as water, sanitation, health care, and livelihoods. The project is co-financed by the Swiss Agency for Development and Cooperation (SDC) and private partners such as Lokales Wasser / Max Ditting AG. Together, they support practical improvements that help heavily affected communities cope with everyday challenges. Through this public-private partnership, municipal systems are strengthened to better respond to migration, improve service delivery, and create more stable living conditions for displaced people.

→ www.swisscontact.org/shompritee



"My many years of experience with Swisscontact have built trust, and it is precisely this trust that has led me to become a partner in this project."

Urs Grütter, Owner and Chair "Lokales Wasser 37"

EYE FOCUS PROJECT, KENYA



Photo: At the Kilifi County Referral Eye Unit, Rehema undergoes a specialised eye assessment by Dr. David Taura, Ophthalmic Clinical Officer.

The Eye Focus Project in Kenya improves access to eye care services for people in rural and peri-urban areas. It strengthens local health markets by establishing public-private partnerships in ophthalmology and involving both government institutions and private health providers. Through this collaboration, a resilient system emerges that improves healthcare provision and local economic productivity over the long term. The project is funded by Novartis and the Fred Hollows Foundation.

→ www.swisscontact.org/eye-focus



"What we value most about our partnership with Swisscontact is the shift from transactional engagement with the private sector to strategic collaboration. We are not only strengthening last-mile eye care services but also reinforcing the health system in a way that delivers sustainable impact for communities and meaningful value for private sector actors."

Reshma Parmanand, Director Portfolio and Scale The Fred Hollows Foundation

Partnerships:

www.swisscontact.org/report2025/partnerships



Driving sustainable impact locally

Swisscontact monitors its own ecological and social footprint, aiming to reduce it by 2028 in line with specific targets. It also supports its partners in countries around the world to do the same and to comply with ESG standards, for example in Bangladesh.



Sustainability Report 2025:
www.swisscontact.org/report2025/sustainabilityreport

In Bangladesh, Swisscontact helped to establish a green consulting ecosystem, when garment factories were faced with increasing ESG requirements from international buyers. This was part of the Promoting Green Growth in the Ready-Made Garments Sector (PROGRESS) project which developed local ESG consulting capacity. It meant that international consultants could be replaced by local ESG consultants, thus creating green jobs while serving industry needs.

To promote mentorship, PROGRESS partnered local consultants with international firms to provide hands-on learning opportunities. They also formed working groups comprising experts from associations, brands and factories, and supported the development of practical services ranging from carbon accounting to sustainability reporting. 63% of the target factories have adopted standards, and local consultants have established viable businesses as cost-effective alternatives to international firms. The supported factories have adopted 53 ESG initiatives, and the project has contributed to reducing an estimated 1,473 tonnes of CO₂ emissions.



Photo: Photo: Bioacoustics Course held at Cuevas Municipal Park.

GOVERNANCE

Swisscontact cultivates local partnerships at eye level and offers support for home-grown initiatives. We co-create innovations with local partners such as municipalities, private sector companies and local NGOs. We co-invest with these partners to share risks for a common purpose, sharing our facilitation role and strategic decision-making responsibilities. Furthermore, we provide technical assistance and other non-financial support to local actors within service-based partnerships.

In the Sustainable Landscape Program Indonesia (LASR) we support the strengthening of multi-stakeholder platforms and active grievance and deforestation response mechanisms that are owned and led by local institutions.

Several governance shifts have been brought about by this locally led collaboration, which is based on co-investment and shared leadership: villages are beginning to formalise their land-use regulations, regency governments are beginning to allocate their own budgets to continue participatory land use planning, and private companies are identifying and conserving high conservation value areas within their concessions.

182 partners supported to strengthen their governance



Photo: Three remarkable careers: Lieutenant Amina Souley, Air Force pilot, Maimouna Gazibo, magistrate and Commander Ouma Laouali, Air Force pilot (from left to right).

GENDER EQUALITY AND SOCIAL INCLUSION

In many regions, women and girls are less likely to enrol in vocational education and training (VET). Even if enrolled, they usually do not have access to the full range of training and career choices due to social norms. Consequently, they tend to remain in professions that are less valued and remunerated, with limited scope for economic advancement. They are particularly underrepresented in STEM (Science, Technology, Engineering and Mathematics) and future-oriented fields and have limited access to upskilling and labour market services.

Swisscontact addresses these challenges in numerous projects. In Niger, for example, the GWANI project supported the creation of a network for women with exceptional career paths, in so-called masculine industries: security, mechanics, architecture, aeronautics, sport, IT, etc. This network has implemented strategic initiatives to inspire a new generation of girls, including creating powerful video vignettes, a series of inspiring portraits, and a podcast. The network has become a movement for social transformation, driven by exceptional women who are deeply rooted in Niger's reality and committed to providing young girls with real-life examples of success. Many of these women are respected pioneers in their field, including Aminatou Seyni, one of the fastest sprinting women on the continent; Colonel Marie Djika, a military commander and Indira Bachar, a meteorologist at Niamey Airport.

72% of projects include gender-positive or -transformative interventions

ENVIRONMENT

Swisscontact has set the goal of reducing its own carbon footprint, as well as contributing to the reduction and prevention of CO₂ emissions through its projects. Emissions have primarily been reduced through the prevention of forest fires, decreased agrochemical use, and improved waste management.

Significant progress has been made towards achieving these goals in 2025, particularly through the Sustainable Mayan Landscapes initiative in Guatemala. This project has prevented 675 047 tonnes of CO₂ emissions from deforestation and degradation and has recycled 40 tonnes of tyres. It has also helped communities and local stakeholders to conserve 625 270 hectares of forest in the Maya Biosphere Reserve. By strengthening community forest management and local governance, the initiative enables people to steward their land while establishing stable and dignified livelihoods. Twenty-two fire prevention groups, local organisations and protected area managers now work together more closely to protect this unique landscape. In addition to conservation, the project promotes sustainable farming, agroforestry, and nature-based businesses in sectors such as tourism, agriculture, and waste management. This helps to restore degraded areas and create new income opportunities.

Greenhouse gas emissions reduced:

- Scope 1 and 2 by **31%** compared to the baseline
- Scope 3 by **18%** compared to the baseline

1.2M t of greenhouse gas emissions avoided through project activities

Organisation

(as per 31 December 2025)

FOUNDATION BOARD



Thomas D. Meyer, Chair
Partner, BLR Partners AG, Zurich; Chairman, CelsiusPro AG, Zurich; Member of the Board AG für die Neue Zürcher Zeitung (NZZ), Zurich, BLR Capital AG, Zurich, Yarowa AG, Zug, Artemis Holding AG, Hergiswil, Sunrise Communicatins AG, Zurich



Isabelle Welton, Vice Chair and Chair HR-Committee
Chair of the Board AG für die Neue Zürcher Zeitung, Zurich; Member of the Board Siegfried AG, Zofingen, SIAF (Schweizerisches Institut für Auslandsforschung) University of Zurich; Member of the Board of Trustees Stiftung Lucerne Festival, Luzern; Owner Rubidia GmbH, Zug



Thomas Bergen
Co-Founder and CEO getAbstract, Lucerne; Co-Founder and Board Member, Amphasys AG, Root; Board Member HopeNow, Lucerne



Monique Bourquin, Chair Finance Committee
Member of the Board of Directors Swisscom AG, Bern, Lindt & Sprüngli AG, Kilchberg, Emmi AG, Lucerne, Rivella and Miroma AG, Rothrist, Kambly SA, Trubschachen, W. Kündig & Cie AG, Zurich; President of Promarca, Bern; Owner and Managing Director Euqinum GmbH, Rüdlingen, Management Member Estarog GmbH



Dr Sabin Bieri
Director, Centre for Development and Environment CDE, University of Bern, Bern; Board Member Engaged UniBE, Solidar Suisse; Member of the Programme Committee International Development, cfd Christlicher Friedensdienst; Vice President of the Advisory Commission for International Cooperation for the Federal Council



Armin Meier
Senior Advisor Boyden global executive search, Zurich; Member of the Board of Kibag, Zurich, IHAG Holding, Zurich, Evalueserve Holdings, Zug, IBS Software Services, Singapore, SPS Holding, Zurich, HSN AG, Hochdorf



Marie-Gabrielle Ineichen-Fleisch
Member of the Board of Directors KIBAG Holding AG, Nestlé S.A., Schweizerische Mobiliar Genossenschaft, F.G. Pfister Holding AG and BVZ Holding AG



Ruedi Schmid
Chairman of the Board of Directors and owner, ESIMAG Immobilien AG; Member of the Executive Committee, HAN-DELSchweiz (Swiss Trade), Basel; Member of the Board of Directors Airport Taxi Zürich Kloten AG, Kloten, PrognosiX AG, Zurich and MERO Mobilitäts AG; Member of the Board of Trustees, Zoo Stiftung Zurich; Member of the Board, economiesuisse; President, Carus Stiftung, Zurich

FOUNDATION COUNCIL

Thomas Bergen
Prof. Dr. Sabin Bieri
Monique Bourquin
Claudia Coninx-Kaczynski
Isabelle Dalli-Wyniger
Amb. Thomas Greminger

Marie-Gabrielle Ineichen-Fleisch
Dr. Karin Lenzlinger Diedenhofen
Rachel Marusak
Armin Meier
Christoph Meier
Thomas D. Meyer

Prof. Dr. Ursula Renold
Dr. Manuel Rybach
Dr. Thomas Sauber
Ruedi Schmid
Isabelle Welton

Auditors

PricewaterhouseCoopers AG,
Zurich

Further mandates and vested interests of all members of the Foundation Council can be viewed on our website.

www.swisscontact.org/report2025/organisation



EXECUTIVE BOARD



Philippe Schneuwly
CEO



Manish Pandey
Director Operations & Quality



Stephanie Dreifuss
Director Partners & Clients



Anne Bickel
Director People & Learning



Stefan Schneider
Director Finance & Technology



Franziska Koller
Director Products & Solutions

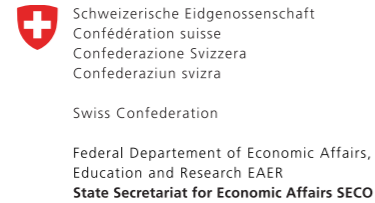
Regional directors and management team.

www.swisscontact.org/report2025/organisation



We would like to thank our partners

STRATEGIC PARTNERS



In alphabetical order

PUBLIC PARTNERS

■ Governments and multilateral institutions

Agence Française de Développement AFD
Australian Department of Foreign Affairs and Trade DFAT
Belgian Development Agency ENABEL
British Foreign, Commonwealth & Development Office FCDO
Dutch Good Growth Fund DGGF
European Union EU
Global Alliance for Trade Facilitation GATF
Inter-American Development Bank IDB
Kreditanstalt für Wiederaufbau KfW
Liechtensteinischer Entwicklungsdienst LED
Ministry of Foreign Affairs of Denmark DANIDA
Norwegian Ministry of Foreign Affairs MFA
State Secretariat for Economic Affairs SECO
Swedish International Development Cooperation Agency, Sida
Swiss Agency for Development Cooperation SDC
The Standards and Trade Development Facility STDF
United States Agency for International Development USAID
United Nations Industrial Development Organization UNIDO
World Bank WB

■ Communes, towns, cantons and parishes

Departement Finanzen und Ressourcen des Kanton Aargau
Gemeinde Maur
Gemeinde Zollikon
Gemeinderat der Gemeinde Uitikon
Kanton Basel-Landschaft
Kanton Glarus
Kanton Schaffhausen
Kanton Solothurn
Kanton Zürich
Katholisch Stadt Zürich
Liechtensteinischer Entwicklungsdienst
Präsidialdepartement der Stadt Zürich
Reformierte Kirche Wallisellen
Stadt St. Gallen
Standeskanzlei Graubünden
Ville de Lancy

PRIVATE PARTNERS

Argidius Foundation
Arthur Waser Foundation
Audemars Piguet Foundation
Charlotte André-Stiftung
Däster-Schild Stiftung
Dr. Guido und Frederika Turin Stiftung
ECOM
Evi Diethelm-Winteler-Stiftung
F. Hoffmann-La Roche AG
Fondation Manpower S.A.
Fred Hollows Foundation
Gasser Partner
Gebauer Stiftung
Geberit International AG
Glas Trösch Holding AG
Gran Tierra Energy
Hagenbuch AG
Happel Foundation
Hilti Foundation
Hirschmann-Stiftung
Kuoni und Hugentobler Stiftung
LENOVO
Leopold Bachmann Stiftung
Leutwyler Partner Architekten
Linsi Foundation
Marcuard Family Office Ltd.
Max Ditting AG
Medicor Foundation
MetLife Foundation
Nestlé SA
Novartis International AG
Schweizerische Nationalbank
SIKA
Stiftung Corymbo
Stiftung Drittes Millennium
Stiftung ESPERANZA
Stiftung Fürstlicher Kommerzienrat Guido Feger
UBS Optimus

Uniscientia Stiftung
Ursula Zindel-Hilti Foundation
UTIL Stiftung
VERLINGUE AG
Werner und Helga Degen Stiftung
Wyss Academy
Zürcher Kantonalbank

KNOWLEDGE PARTNERS

Aspen Network of Development Entrepreneurs (ANDE)
Bain & Company Switzerland Inc.
Berner Fachhochschule BFH
BHP – Bruggler & Partner AG
CDE – Center for Development and Environment, University of Berne
CIRAD –The Agricultural Research Centre for International Development
Eidgenössische Hochschule für Berufsbildung EHB
ETH Zurich (Swiss Federal Institute of Technology)
FiBL – The Research Institute of Organic Agriculture
HSLU Lucerne University of Applied Sciences and Arts
International Labour Organization ILO
International Trade Centre
Involas Institut für berufliche Bildung, Arbeitsmarkt und Sozialpolitik GmbH
Mercy Corps
SABC Swiss African Business Circle
Swiss Capacity Building Facility SCBF
Swiss Platform for Sustainable Cocoa SWISSCO
Swiss Sustainable Coffee Platform SSCP
United Nations Conference on Trade
UNCTAD
University of St. Gallen
UN Global Compact

We would also like to express our sincere thanks to all the individuals who have supported us in 2025.

The detailed online version of the Annual Report 2025 and the Financial Report are available on our website.

www.swisscontact.org

We create opportunities

Swisscontact

SWISS FOUNDATION FOR TECHNICAL COOPERATION

Hardturmstrasse 134
CH-8005 Zurich
Phone +41 44 454 17 17

Cover image

Local youth like Jitendra are driving mechanisation and improving agricultural productivity in Koshi, Nepal.

Photos

Swisscontact employees and friends

Zewo quality seal: Swisscontact was awarded the Zewo quality seal. It is awarded to charitable non-profit organisations that are trustworthy, use their donations economically, effectively, and for their designated purpose, and provide transparent information. Swisscontact is regularly audited on its adherence to these criteria. (Source: Zewo)



**Your donation
in good hands.**

Swisscontact is a member of Transparency International and UN Global Compact.